

Acuta Standard GPS Antenna

Part No. A10415

Product Specification

1 Features

- GPS antenna designed for embedded applications
- Small size and light weight (0.5g)
- High performance
- Upward hemispherical RHCP pattern
- Simple matching circuit tuning
- Works in many different positions in the device
- No extra mechanical support required

2 Description

Acuta GPS antenna is an innovative high performance GPS antenna designed to replace ceramic patch antennas without compromising performance, reduce development costs and improve time-to-market. The very slim A10415 allows a substantial reduction in the minimum thickness of the host device compared to a solution using a 12x12mm² ceramic patch antenna.

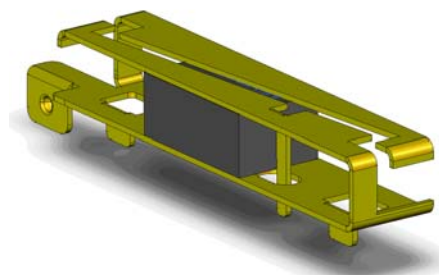
Acuta is intended to be mounted at the edge of the host PCB facing the sky, in a similar way to a conventional patch antenna, which generates an almost hemispherical radiation pattern towards the sky - achieving optimal GPS performance.

Acuta GPS antenna is intended for reception of GPS signals at 1575 MHz and is easily tuned using a simple matching circuit on the host PCB, allowing the same antenna to be used in different devices without physical modifications. The antenna is soldered directly onto the host PCB, without the need of expensive coaxial cables, RF connectors or mounting frames, significantly reducing the total BOM of the GPS solution.

The antenna uses a ground plane in order to radiate efficiently, which should be at least 30 x 30 mm.

3 Applications

- Portable Navigation Devices (PNDs)
- GPS Trackers
- Mobile phones/ Smart phones
- Notebooks / Tablets / eReaders
- M2M



4 Part number

Acuta: A10415



(Bottom View)

5 General data

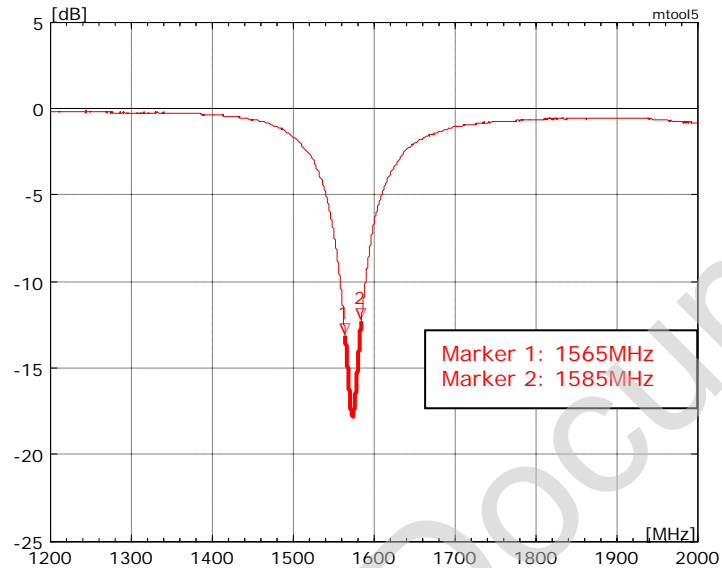
Product name	Acuta
Part Number	A10415
Frequency	GPS - 1575 MHz
Polarization	Linear
Operating temperature	-40 °C to +85 °C
Impedance with matching	50 Ω
Weight	0.5 g
Antenna type	Metal
Dimensions (LxWxH)	25.0 x 5.0 x 4.0 [mm] (Effective) 29.6 x 5.0 x 5.6 [mm] (Total)

6 Electrical characteristics

	Typical performance Reference Board A10415-U1	Conditions
Bandwidth (Typical)	30 MHz at -10 dB Return Loss	All data measured on Antenova's reference board, part number A10415-U1 Data given for the 1573.42 – 1577.42 MHz frequency range
Peak gain (Linear)	+0.4 dB	
Average gain (Linear)	-2.2 dB	
Average efficiency (Linear)	60%	
Peak gain (RHCP)	-1.0 dB	
Average gain (RHCP)	-3.9dB	
Average efficiency (RHCP)	40%	
Maximum Return Loss	-10 dB	
Maximum VSWR	2:1	

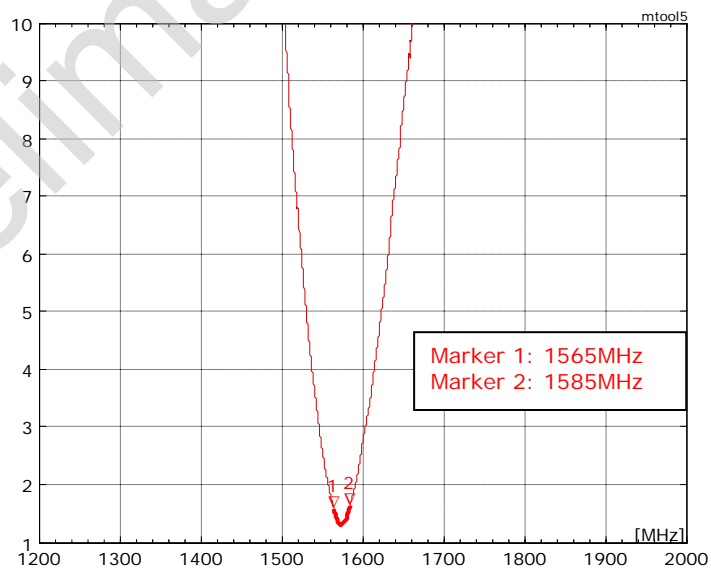
7 Electrical performance

7-1 Return Loss (with matching circuit)



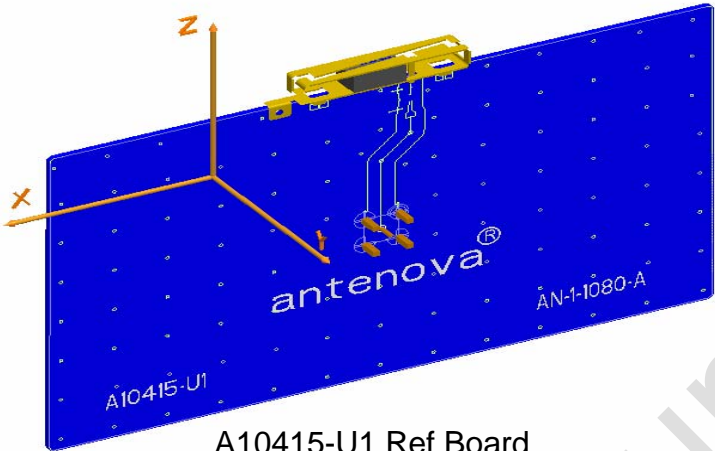
Reference Board A10415-U1

7-2 VSWR (with matching circuit)



Reference Board A10415 -U1

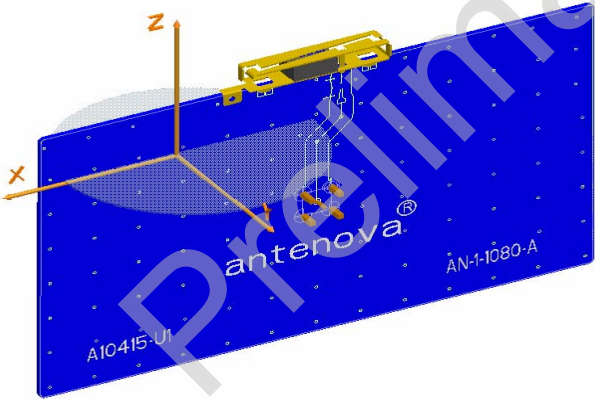
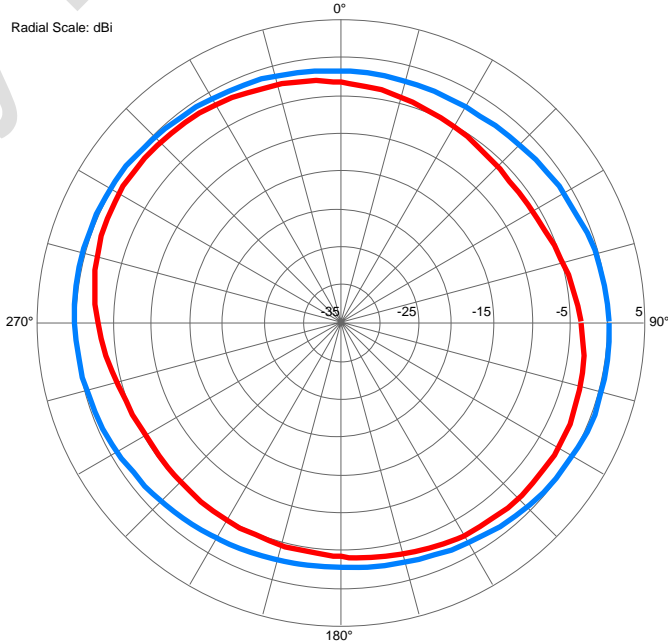
7-3 Antenna patterns 1575MHz



A10415-U1 Ref Board

— TOTAL (RHCP+LHCP)
— RHCP ONLY

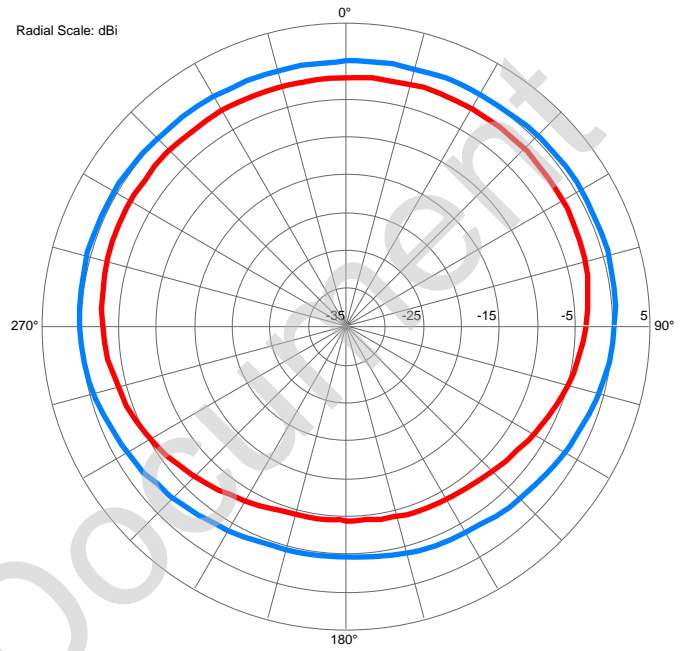
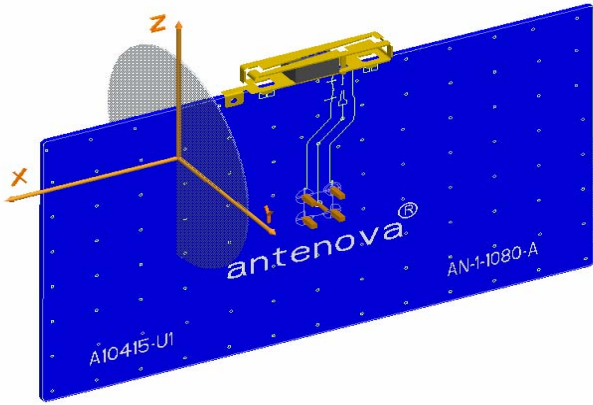
Radial Scale: dBi



XY Plane

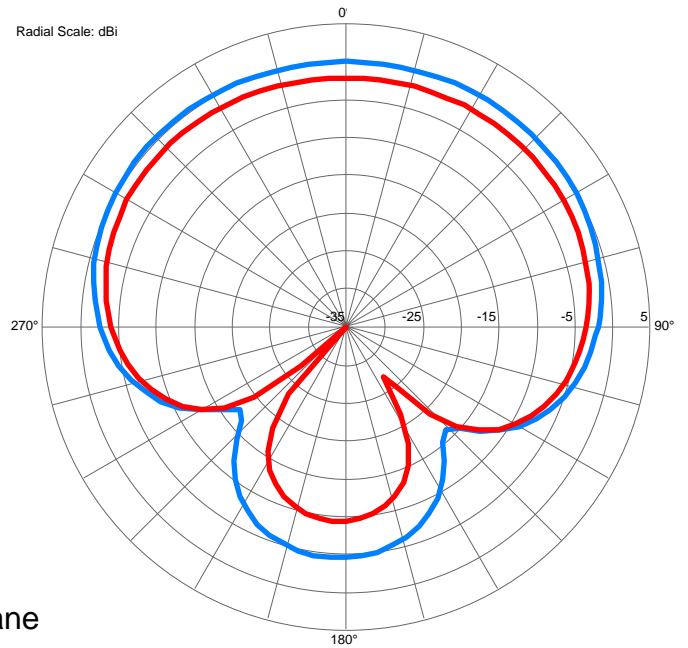
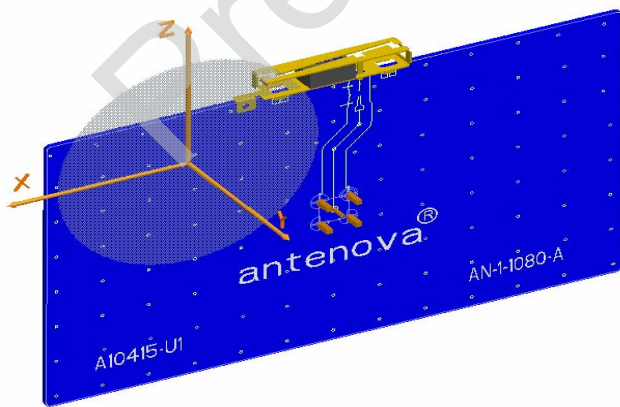
Acuta Standard GPS Antenna
Part No. A10415

— TOTAL (RHCP+LHCP)
— RHCP ONLY



ZY Plane

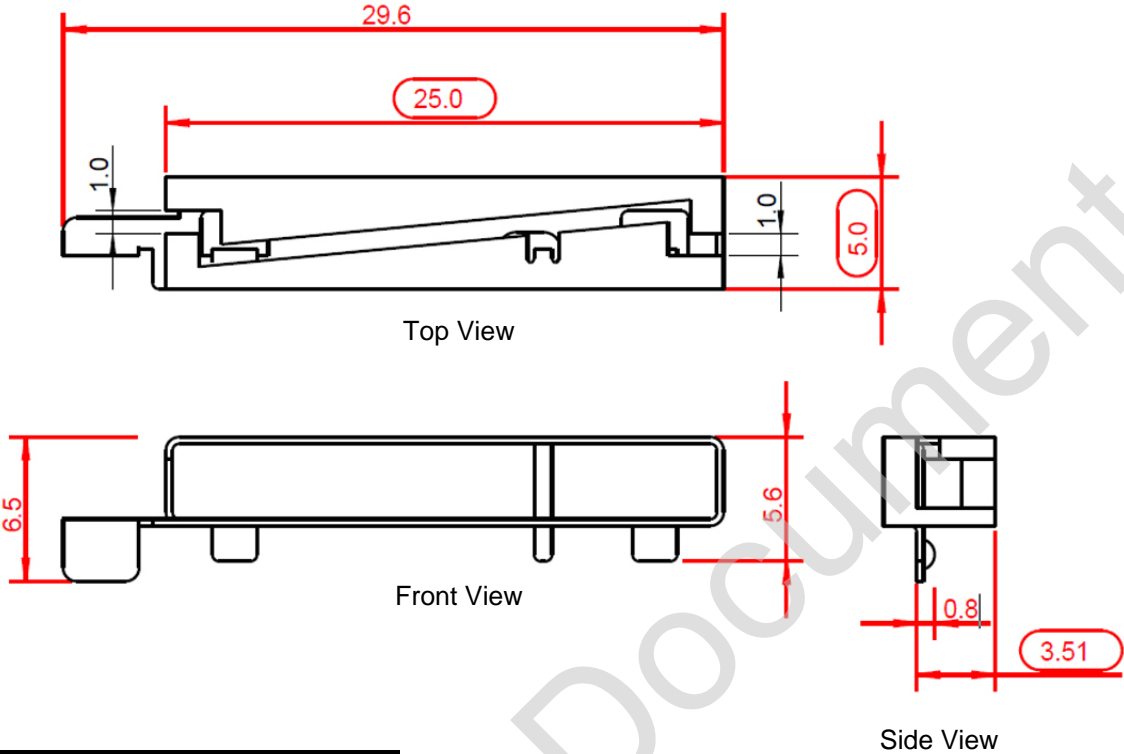
— TOTAL (RHCP+LHCP)
— RHCP ONLY



XY Plane

Integrated Antenna and RF Solutions

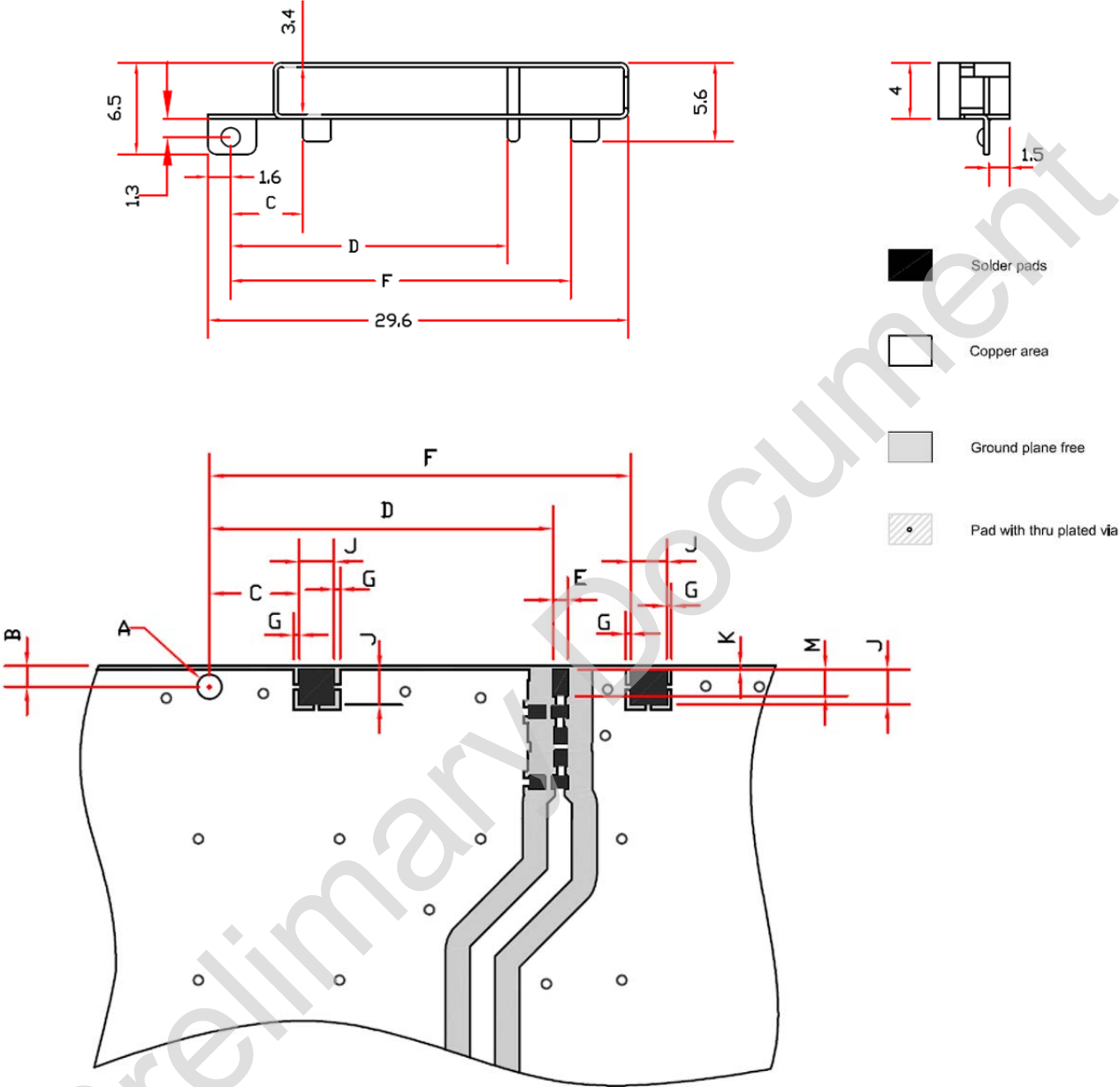
8 Antenna dimensions



L	W	H
Length	Width	Height
25. ± 0.2	5.0 ± 0.2	4. ± 0.15

9 Antenna footprint

GPS Antenna (Part No: A10415)



A	B	C	D	E	F	G	J	K	M
1.4	1.2	5.1	19.5	0.8	23.9	0.3	2.0	0.2	1.5

Dimensions in mm. Tolerances for all dimensions on this table are ± 0.1 mm.

* CAD files of the antenna footprint are available from Antenova on request. Please contact info@antenova.com for further details.

10 Electrical interface

10-1 Transmission lines

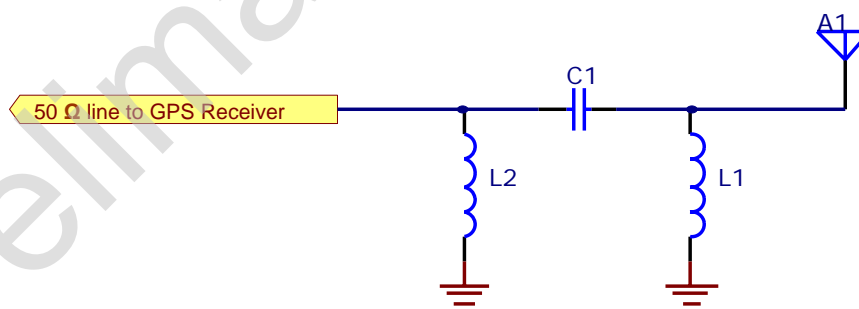
- All transmission lines should be designed to have a characteristic impedance of 50 Ω
- The length of the transmission lines should be kept to a minimum
- Any other parts of the RF system like transceivers, power amplifiers, etc, should also be designed to have an impedance of 50 Ω

Once the material for the PCB has been chosen (PCB thickness and dielectric constant), a coplanar transmission line can easily be designed using any of the commercial software packages for transmission line design. For the chosen PCB thickness, copper thickness and substrate dielectric constant, the program will calculate the appropriate transmission line width and gaps on either side of the track so the characteristic impedance of the coplanar transmission line is 50 Ω .

10-2 Matching circuit

The A10415 antenna is designed to resonate at a frequency slightly higher than the GPS band, and a matching circuit is required to tune the antenna to the exact frequency; in this way the antenna can be used in many different devices just by changing the matching circuit.

The matching circuit typically required just two passive components (inductors/capacitors); however, a three component PI-network like the one in the picture below figure is recommended for safe-proofing. The matching circuit must be placed as close as possible to the feed pin of the antenna.



In a typical application, the following values for the components could be used as a starting point in the matching process:

Designator	Value
L1	10nH
C1	1.0pF
L2	Not fitted

Use of reasonable high Q inductors (e.g. Murata LQW15 series) is recommended for the inductors; as typically the value of the series capacitor is quite small, the use of tight tolerance capacitors is recommended.

Note: The component values for the matching circuit will vary depending on how close to the antenna the device's plastic case is, the size of the host PCB and surrounding components. The impedance of the antenna should be measured before selecting suitable matching components. Antenova offers this service on request. Contact info@antenova.com for further information.

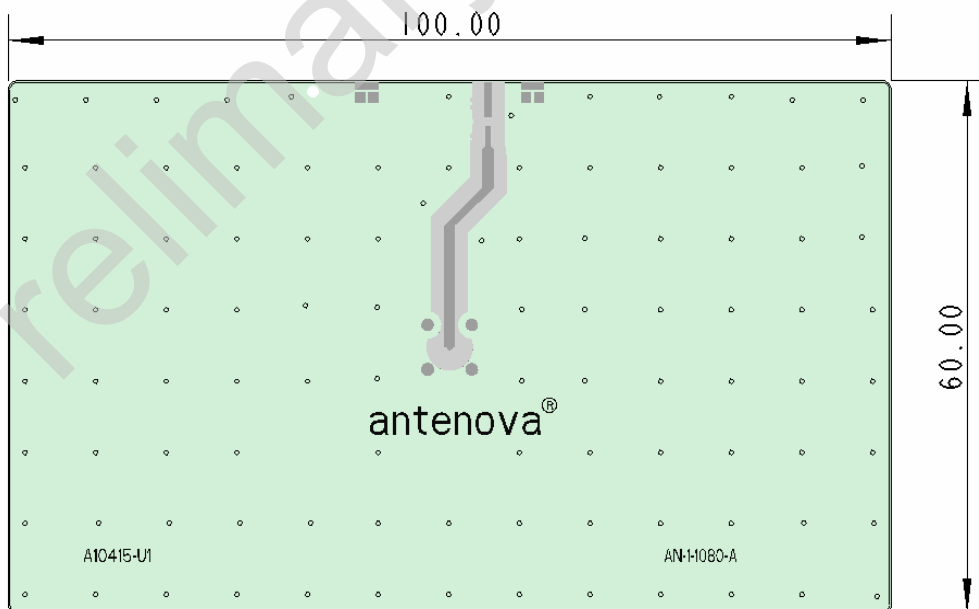
10-3 Antenna placement

The A10415 is designed to give optimal performance when mounted along the top-edge of the device PCB, facing the sky during the normal use scenario. Recommended position is indicated on the Acuta reference board A10415-U1 (shown below).

However, the antenna can also work well when placed in other locations in the device. Please contact Antenova FEA for recommendations about alternative antenna placements or unusual use scenarios.

10-4 Reference board

The reference boards have been designed for evaluation purposes of the Acuta GPS antenna and they include a SMA female connector.



A10415-U1

Dimensions in mm

Contact info@antenova.com for further details

11 Soldering

The antenna is designed for hand-soldering; reflow soldering must not be used as it could damage the antenna.

It is recommended the use of a simple jig to help positioning accurately the antenna and hold it in place during the soldering process. The design of the jig depends on the details of the host device, so it cannot be created by Antenova.

This antenna is suitable for lead free soldering.

12 Hazardous material regulation conformance (coming soon)

13 Packaging (details coming soon)



www.antenova.com

Corporate Headquarters

Antenova Ltd.
Far Field House
Albert Road
Stow-cum-Quy
Cambridge
CB25 9AR

Tel: +44 1223 810600
Fax: +44 1223 810650
Email: info@antenova.com

North America Headquarters

Antenova Ltd.
Rogers Business Park
2541 Technology Drive Suite 403
Elgin, IL 60124

Tel: +1 (847) 551 9710
Fax: +1 (847) 551 9719
Email: info@antenova.com

Asia Headquarters

Antenova Asia Ltd.
4F, No. 324, Sec. 1, Nei-Hu Road
Nei-Hu District
Taipei 11493
Taiwan, ROC

Tel: +886 (0) 2 8797 8630
Fax: +886 (0) 2 8797 6890
Email: info@antenova.com

Copyright® 2011 **Antenova Ltd.** All Rights Reserved. Antenova® is a trademark of Antenova Ltd. Any other names and/or trademarks belong to their respective companies.

The materials provided herein are believed to be reliable and correct at the time of print. Antenova does not warrant the accuracy or completeness of the information, text, graphics or other items contained within these information. Antenova further assumes no responsibility for the use of this information, and all such information shall be entirely at the user's risk.



Certificate No: 4598

Integrated Antenna and RF Solutions